

DLW-LED-032



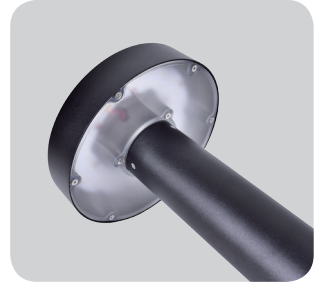
A



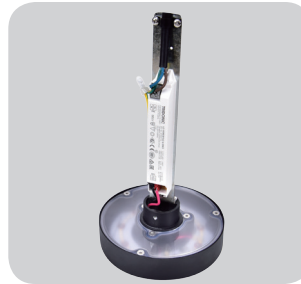
B



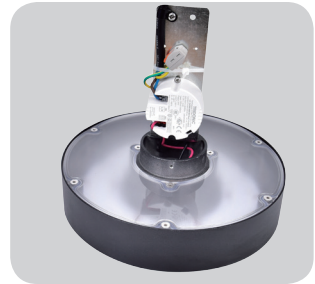
Base



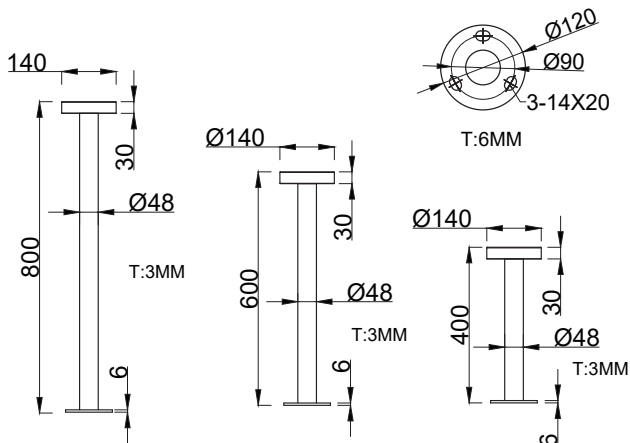
Injection PC diffuser



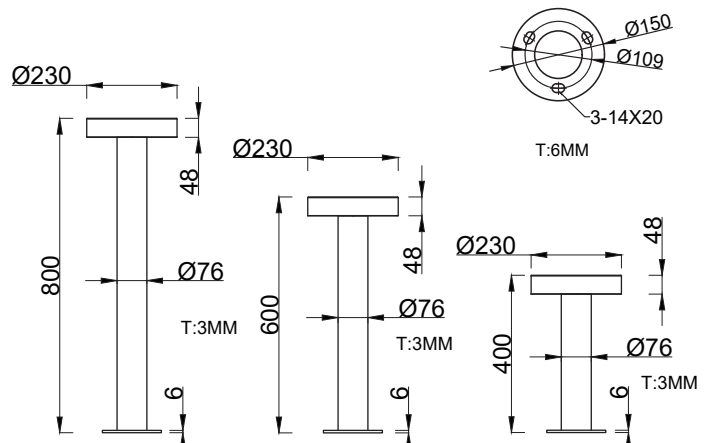
Head A



Head B



A



B

Application:



Walkways



Parks and Gardens



Car parks



Prestigious

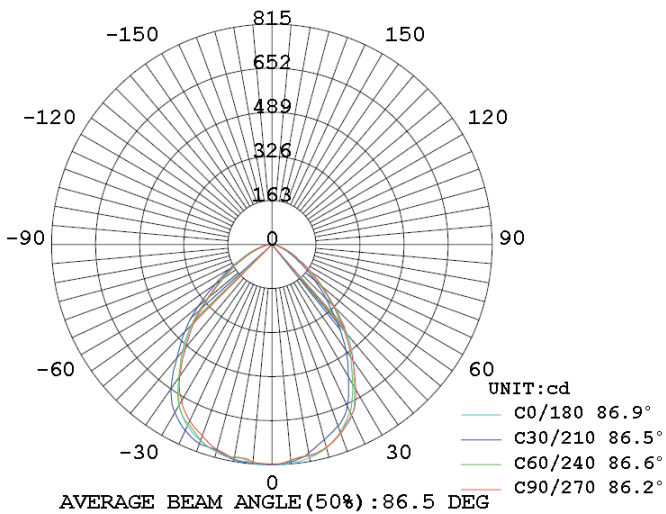


Retail



Amenity

Distribution:



Features:

- Main body is made of Die-casting aluminum alloy with Extruded aluminum alloy.
- The diffuser is a frosted anti-UV polycarbonate for high efficiency and vandal resistance.
- Lumileds 2835 led chip and Tridonic driver.
- Easy access to LED and driver via a removable head.
- 2700-6500K color temperature options.
- Tamper proof fixings for increased vandal resistance.
- Anti-UV electrostatic powder spraying, regular color: Black, Silver, RAL7043, RAL7016
- IP65 rating water and rust proof protection.
- IK08 rating housing protection.
- Warranty is 3-5 years.

Specification:

Item No.	LED	Lumens	Wattage	CCT	CRI
DLW-LED-032A-10W	Lumileds 2835	663LM	10W	2700-6500K	Ra≥80
DLW-LED-032B-10W	Lumileds 2835	811LM	10W	2700-6500K	Ra≥80
DLW-LED-032B-14W	Lumileds 2835	1091LM	14W	2700-6500K	Ra≥80
DLW-LED-032B-20W	Lumileds 2835	1498LM	20W	2700-6500K	Ra≥80
DLW-LED-032B-24W	Lumileds 2835	1753LM	24W	2700-6500K	Ra≥80
DLW-LED-032B-30W	Lumileds 2835	2091LM	30W	2700-6500K	Ra≥80